

FREEHOLD



House - Semi-Detached (EPC Rating: D)

**CORNELL WAY,,  
ROMFORD,,RM5 2HN.**

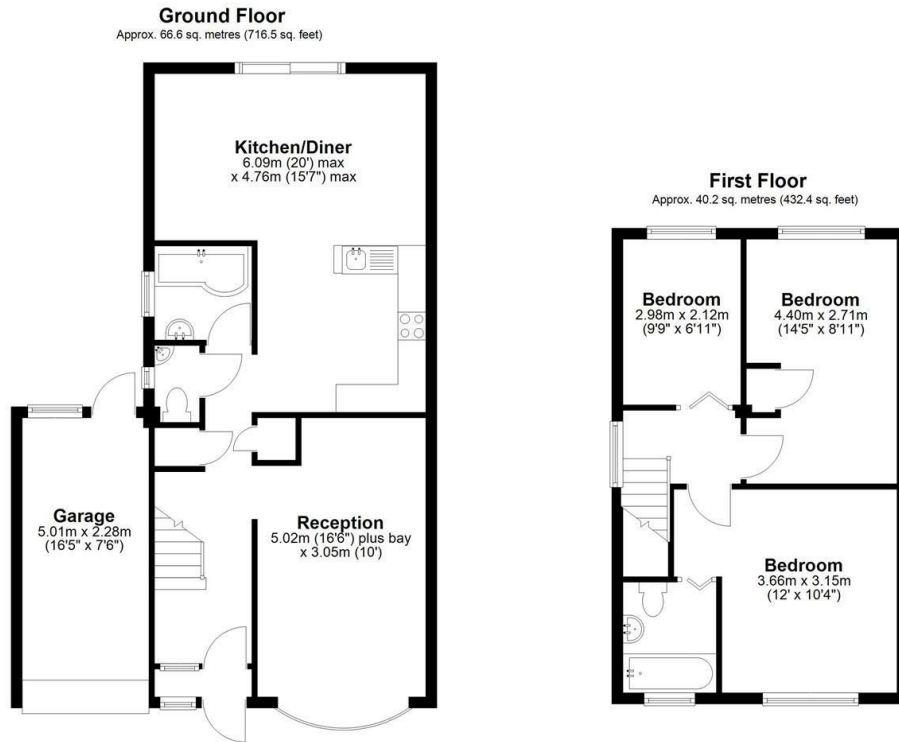
Guide Price

**£475,000**



# 3 Bedroom House - Semi-Detached located in Romford

EXTENDED..... PLUS TWO BATHROOMS. Brought in 1970 by the current owners this spacious semi-detached family home. Great size lounge, fitted kitchen plus 16' rear extended dining room. Full bathroom downstairs plus en-suite bathroom to the master bedroom. Three good size bedrooms, lovely back garden, large drive with ample parking plus attached garage. Guide Price £475,000-£500,000

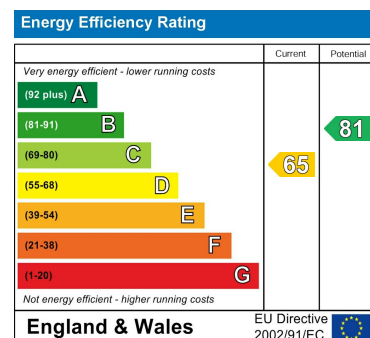


Total area: approx. 106.7 sq. metres (1148.9 sq. feet)

Whilst every attempt has been made to ensure the accuracy of the floorplan contained here, measurements of doors, windows, rooms and any other items are approximate and no responsibility is taken for any error, omission or mis-statement. This plan is for illustrative purposes only and should be used as such by any prospective purchaser. The services, systems and appliances shown have not been tested and no guarantee as to their operability or efficiency can be given. Plan produced using PlanUp.

Council Tax Band  
**D**

Energy Performance Graph



Call us on

**020 8593 5933**

[dagenham@steps.me.uk](mailto:dagenham@steps.me.uk)

[www.steps.me.uk](http://www.steps.me.uk)

Agents Note: Whilst every care has been taken to prepare these particulars, they are for guidance purposes only. All measurements are approximate and are for general guidance purposes only and whilst every care has been taken to ensure their accuracy, they should not be relied upon and potential buyers are advised to recheck the measurements.